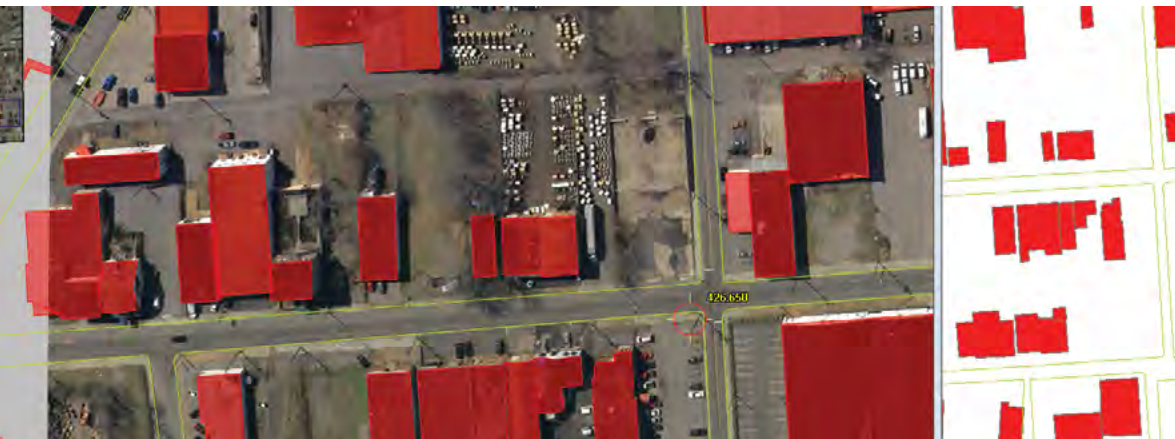


World-Class Digital Photogrammetric Workstation

DAT/EM Photogrammetric Software Suite



SUMMIT EVOLUTION™



Summit Evolution takes 3D stereo vector digitizing to a new level with its integration of digital stereoplotter, CAD and GIS interfaces, 3D stereo vector superimposition, automated feature editing and contour generation. Through its unique and customizable Capture™ interface, image features from a Summit Evolution project are digitized directly into AutoCAD®, MicroStation® or ArcGIS®.

DAT/EM SuperImposition™ is built into every Summit Evolution system, which is offered in three different product level packages as well as a new Summit Evolution Mobile option. Additionally, integration with the LandScape™ point cloud editing toolkit is standard.

Features

- Supports monochromatic, panchromatic, three-channel and multi-channel multispectral imagery.
- Supports scanned aerial film, matrix and push-broom digital airborne cameras, small- and medium-format metric cameras, close-range imagers, orthophotos, RPC satellites, LiDAR, and synthetic aperture radar.
- Imports third-party softcopy projects, aerotriangulation results, and other orientation files for quick setup.
- Full range of manual and automatic image orientation capabilities.
- Digitizes 3D vectors directly into AutoCAD, MicroStation, or ArcGIS using DAT/EM's unique, world-class Capture interface.
- Robust and easy-to-use user interface for maximum productivity.
- Multiple stereo viewing points including Bird's-eye, Close-up, Project Overview, and 3D Vector Split windows for a variety of visualization and feedback tools.
- Multiple project windows.
- Unlimited zoom levels, fast pan, and automatic loading of adjacent stereomodels, with SuperImposition of CAD and GIS vectors over image view.
- DAT/EM Ortho+Mosaic™ module for easy and precise creation of orthomosaics, including true orthos.
- The Terrain Visualizer tool for dynamic, real-time preview of contours while DTM objects are edited.
- Contour Creator™ for creating and writing the finished contours to the CAD file.
- Interface to the DAT/EM-PCI ProPack to allow use of PCI PIX Imagery.
- Airfield3D™ standards-compliant airspace obstruction mapping tool.
- Point Translator for importing, regriding, and converting point data, including LiDAR and other DTM features.
- Summit Evolution Mobile package available which runs on touch screen tablets with Windows 8 in the Summit anaglyph stereo mode.
- 64-bit and 32-bit applications available.

Three Packages

PROFESSIONAL

Full-function, fully capable stereoplotter.

FEATURE COLLECTION

For those whose orientation requirements are met elsewhere, but who still require the world-class Capture interface to a CAD or GIS program.

LITE

A low-cost system designed for viewing, terrain following, and simple editing and measurement.

Vector SuperImposition	■	■	■
Viewing, terrain following, and simple editing and mensuration	■	■	■
Capture add-on for Microstation, AutoCAD or ArcGIS	■	■	■
Satellite Propack Interface	■	■	■
Complete software documentation and one year system support	■	■	■
LandScape Integration Available	■	■	■
MapEditor automated editing software for AutoCAD or Microstation	■	■	
Advanced 2D and 3D editing, snapping, attribute handling	■	■	
Terrain Visualizer	■	■	
Contour Creator	■	■	
Point Translator	■	■	
Project Status Tracker	■	■	
Ortho+Mosaic			■
Airfield3D for ArcGIS			■



LANDSCAPE™



CAPTURE™



MAPEDITOR™



ORTHO+MOSAIC™



AIRFIELD3D™



CONTOUR CREATOR™



HARDWARE



DAT/EM Systems International
8240 Sandlewood Place, Suite 101
Anchorage, AK 99507 USA

T: +1 907-522-3681

F: +1 907-522-3688

sales@datem.com

www.datem.com

Stay Connected